



Larchmont Yacht Club
ONE HUNDRED EIGHTEENTH RACE WEEK
DAY RACE SERIES FOR CRUISING BOATS,
Saturday, July 16; Sunday, July 17; Saturday, July 23; Sunday, July 24, 2016

SAILING INSTRUCTIONS

1st Amendment to the Sailing Instructions

- 9** **SCORING section 9.4 only is changed to**
9.4 PHRF time allowances will be computed using Time on Distance based on the boats for W/L races. For IRC the boat's rating allowance will be applied as a factor of the elapsed time.

Cynthia Parthemos
Event Principal Race Officer

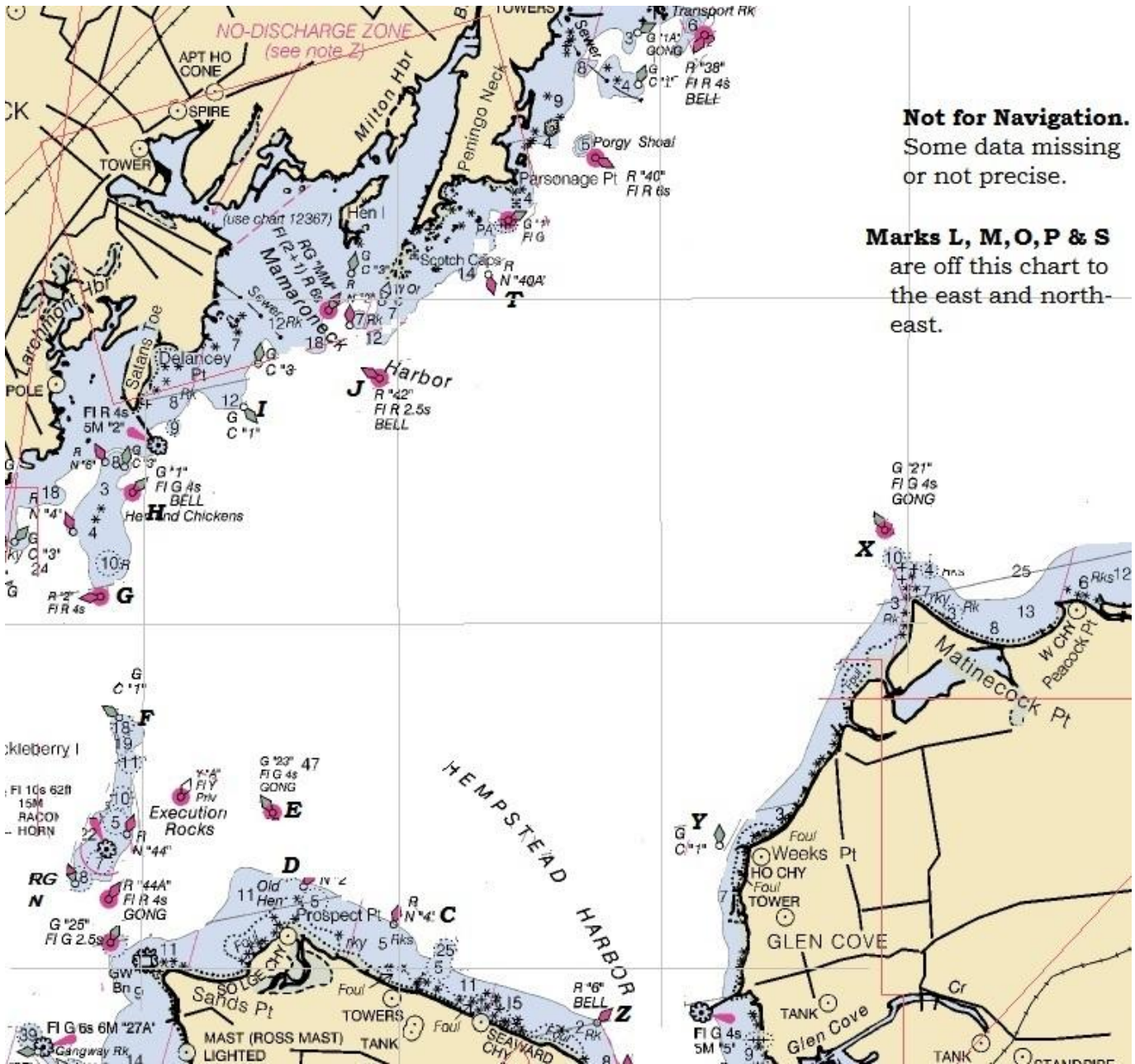
7/16/16

APPENDIX A

			LAT	LON
Letter Code	Approximate Location	Description	(Degrees, decimal min.)	
H - hotel	Hen & Chickens	G "1" Fl G 4s BELL	40° 54.8'	73° 44.1'
G - golf	South of Hen & Chickens	R "2" Fl R 4s	40° 54.2'	73° 44.3'
F - foxtrot	North of Execution Rock	G C "1"	40° 53.5'	73° 44.2'
E - echo	Prospect Point	G "23" Fl G 4s GONG	40° 52.7	73° 43.0'
D - delta	East of Prospect Point	R N "2"	40° 52.5'	73° 42.7'
C - charlie	East of Prospect Point	R N "4"	40° 52.2'	73° 42.0'
Y - yankee	Off Weeks Point (Long Island)	G C "1"	40° 52.7'	73° 39.5'
Z - zulu	Mott Point	R "6" Bell	40° 51.6	73° 40.4
X - xray	Matinecock Point	G "21" Fl G 4s GONG	40° 54.6	73° 38.2
O - oscar	Oak Neck Point	C "19" Green Can	40° 55.5'	73° 34.2'
L - lima	Lloyd Point	G "15" FL G4s GONG	40° 57.7'	73° 29.3'
S - sierra	Mid Sound	R "32A" FL R 2.5s Bell	40° 58.1'	73°32.8'
P - papa	Cows	R "32" FL R 6s Bell	41°00.2'	73°31.4'
M - mike	Off Manursing Island	R "36" Bell	40° 58.1	73° 38.8
T - tango	Off Peningo Neck	R N "40A"	40° 56.1'	73° 41.3'
J - juliett	Off Mamaroneck Harbor	R "42" Fl R 2.5s BELL	40° 55.5'	73° 42.2'
I - india	East of Larchmont Breakwater	G C "1"	40° 55.3'	73° 43.3'

In addition to the government marks the race committee may use one yellow inflatable mark, which will be designated mark "A" (Alpha). If the race committee uses mark "A" it will announce its approximate location on the VHF communication channel.

Appendix B



Not for Navigation.
Some data missing or not precise.

Marks L, M, O, P & S are off this chart to the east and north-east.

G 21"
FI G 4s
GONG

X

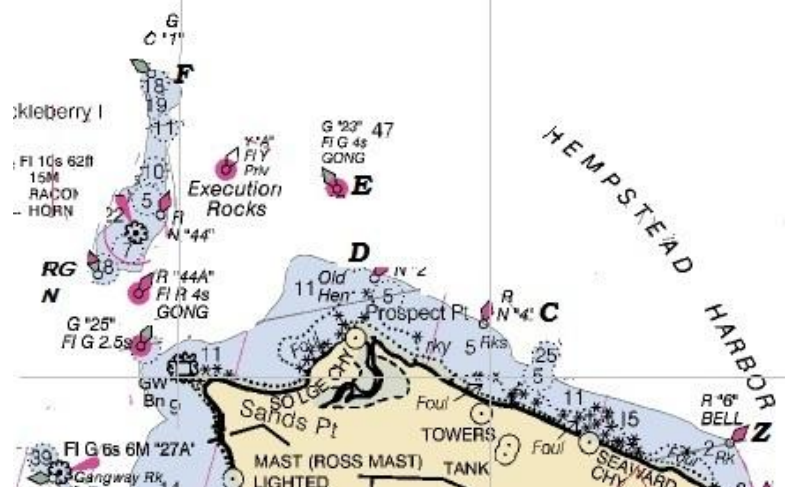
Matinecock Pt
W CHY
Pebble Pt

Y

Glen Cove
TANK

Gr

TANK



Execution Rocks
MAST (ROSS MAST) LIGHTED

Execution Rocks

E

D

C

N

Z

Y

X

TANK